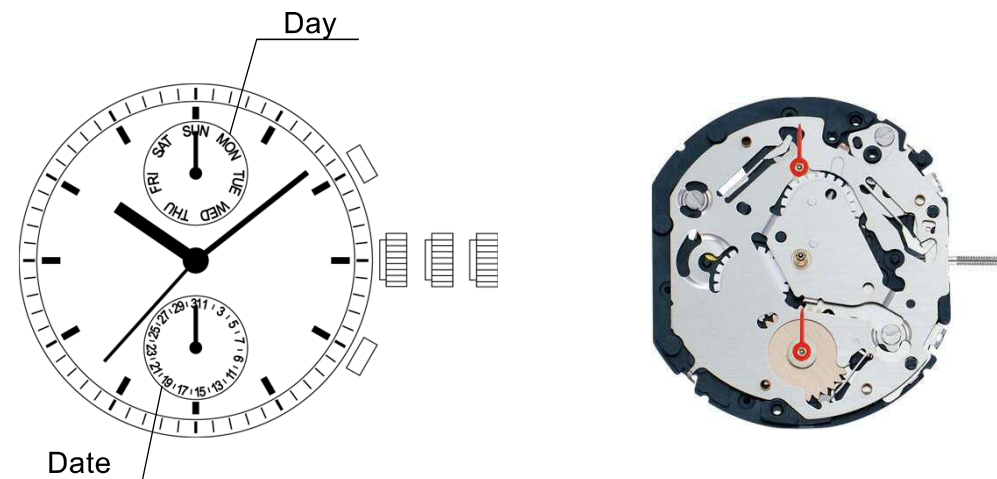


Watch Movement Parts List and Disassemble Guide

# Cal.VX9PE

**MULTI-FUNCTION**

- Day / Date
- Pusher



## MOVEMENT SPECIFICATIONS

**Movement Size** 12 3/4'''

**Height** 3.99mm

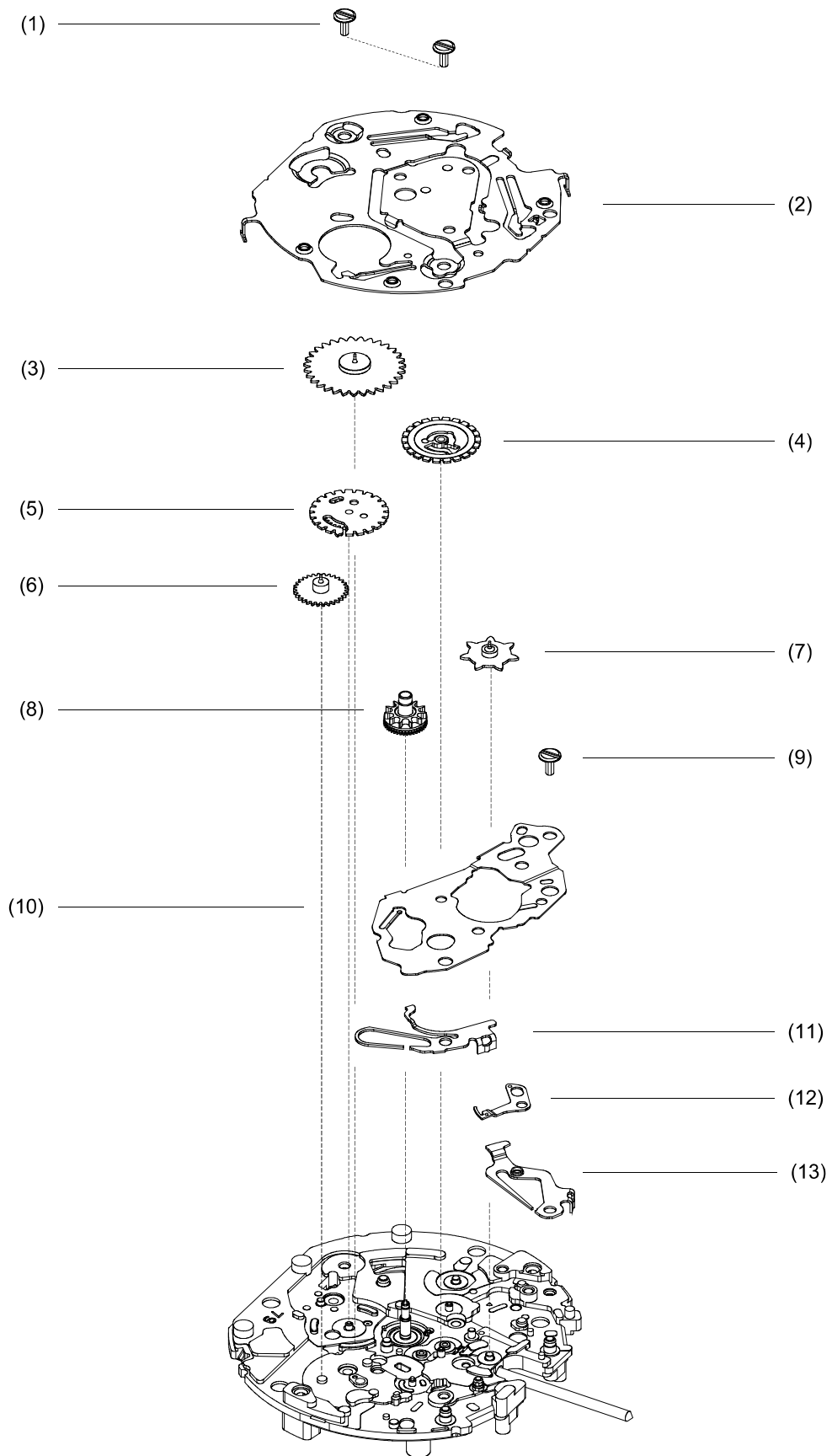
**Casing Diameter** Ø 28.6mm

**Battery Life** 3 years

# Cal.VX9PE Parts List / 零件一覽表

No.	PARTS NAME	CHINESE	QTY	VX9PE1
(1)	Screw	螺丝	2	0022 222
(2)	Calendar cover	日历盖板	1	0839 511
(3)	Date wheel	日历星轮	1	0970 503
(4)	Day indicator driving wheel	星期驱动轮	1	0802 519
(5)	Date indicator driving wheel	日历驱动轮	1	0802 518
(7)	Day wheel	周历轮	1	1002 546
(8)	Hour wheel	时轮	1	0271 658
(9)	Screw	螺丝	1	0022 222
(10)	Corrector lever cover	修正簧固定片	1	0837 504
(11)	Date corrector lever maintaining plate	日历修正簧	1	0595 501
(13)	12h day corrector lever maintaining plate	12时星期修正簧	1	0733 500
(14)	Battery	电池	1	3013 150
(15)	Screw	螺丝	2	0022 247
(16)	Battery connection (+)	正极片	1	4268 540
(17)	Circuit block	电路板	1	4000 760
(18)	Train wheel bridge	夹板	1	0125 519
(19)	Fourth wheel	4号轮	1	0241 559
(20)	Third wheel	3号轮	1	0231 904
(21)	Fifth wheel	5号轮	1	0701 904
(22)	Rotor	转子/步步马达	1	4146 890
(23)	Minute wheel	度数轮/分轮	1	0261 908
(24)	Train wheel setting lever	轮组止动竿	1	0391 890
(25)	Setting lever	押制竿	1	0383 891
(26)	Yoke	换日竿/横担	1	0384 503
(27)	Setting wheel	小铁车/拨针轮	1	0281 904
(28)	Setting stem	把芯	1	0351 578
(29)	Clutch wheel	猪笼轮	1	0282 890
(30)	1st calendar corrector setting transmission wheel	第一日历中间轮	1	0962 890
(31)	Screw	螺丝	1	0022 247
(32)	Coil block	线圈	1	4002 556
(33)	Stator	定子/转子甲板	1	4239 554
(34)	Center wheel	中心轮	1	0221 602
(35)	Battery insulating plate C	绝缘片	1	4216 904
(36)	Battery connection (-)	负极片	1	4270 904

# Parts List / 零件一覽表



# Parts List / 零件一覽表

